

# - Hansabred - European Strawberry Breeding and Research

K. Olbricht, H. Wagner, M. Staden, P. Walpole, A. Vissers, M. Brinkmann  
Hansabred GmbH & Co. KG, Radeburger Landstraße 12, 01108 Dresden, Germany, k.olbricht@hansabred.org

## Company structure

In 2008, Hansabred GmbH & Co. KG was founded as a European strawberry breeding and research company. The shareholders are four major European strawberry companies: *Kraege Beerenpflanzen* (Germany), *Vissers* (Netherlands), *R. W. Walpole Strawberry Plants Ltd.* (UK) and *Plantas de Navarra, S.A.* (Spain).



## Company goals

250 years of strawberry breeding have led to numerous so-called tunnel effects which resulted in susceptibilities to pathogens and in aroma patterns with low or even zero key volatile concentrations. Important aspects of the *Hansabred* breeding programme are high resistance to different pathogens and improved strawberry flavour. A large germplasm collection, the "Professor Staudt Collection" is available with more than 900 accessions of wild species and a cultivar collection with ca. 200 cultivars. This background allows innovative pathways in strawberry breeding. Today, first vigorous cultivars with excellent flavour are in introduction ('Rendezvous', 'Renaissance', 'Lola'). *Hansabred* has initiated a project network together with fruit processing and flavour companies as well as national and international research institutes and universities.

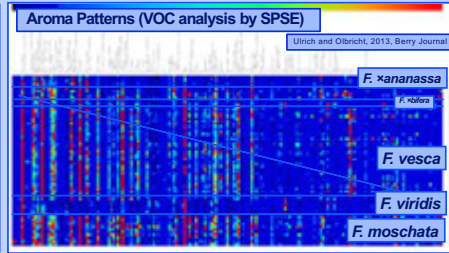
## Breeding extend

- Open Field (1ha per year) with ca. 10.000 -15.000 seedlings per year, pre-selected out of ca. 50.000 seedlings per year
- greenhouse with ca. 2500 preselected seedlings everbearer, 1000 preselected seedlings junebearers per year
- originated from ca. 150 cross-breeding groups per year
- 500 bis 1200 new clone selections per year in open field and greenhouse

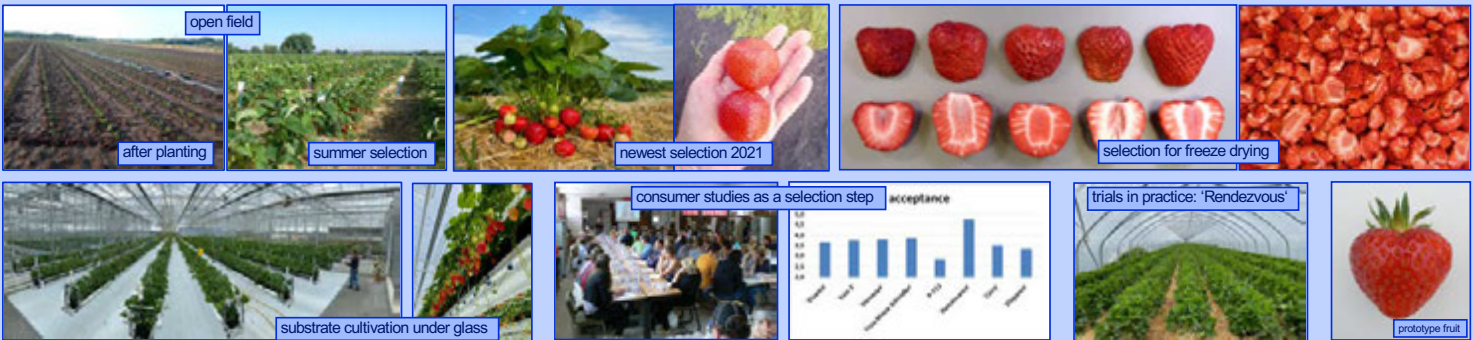
## Germplasm /Genetic Ressources



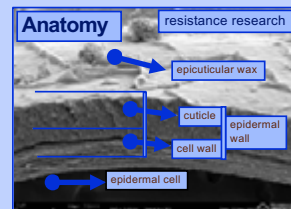
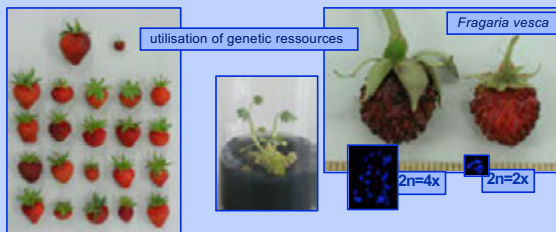
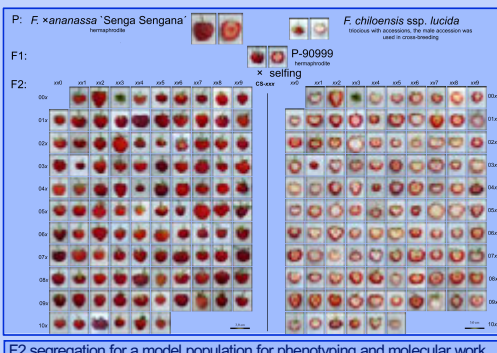
- Maintenance
- Phenotyping
- Taxonomical studies, Biogeography
- Resistance evaluation
- Fruit analysis (fruit size, Brix, CEA, VOCs, NonVOCs)
- Molecular analysis
- Interspecific hybridisation
- Mutation breeding
- Introgression to the cultivated strawberry



## Selection



## Breeding and Research and Education



International master students Humboldt University Berlin at their summer school in Dresden.

